

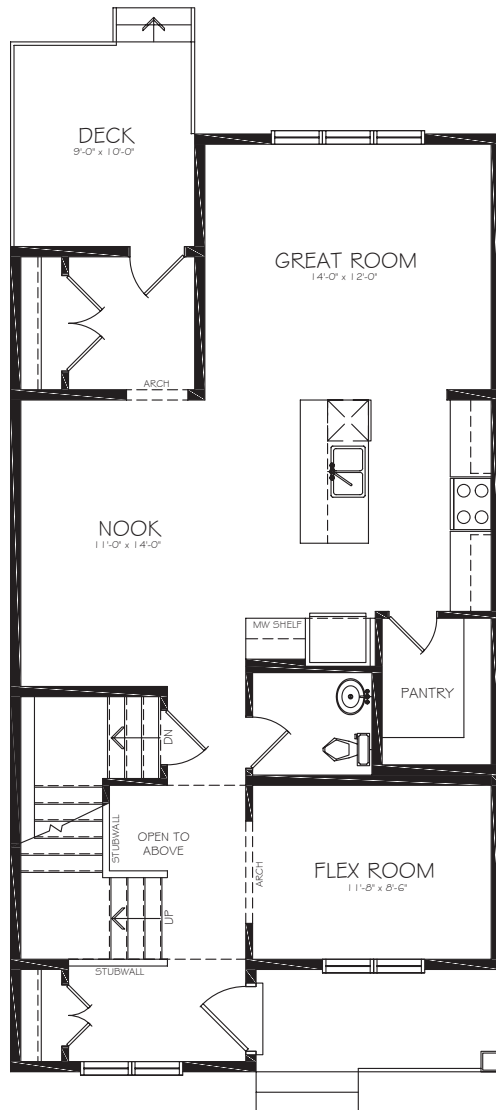
BARROW

1,810 SF // 3 beds // 2.5 baths

5TH
AVE

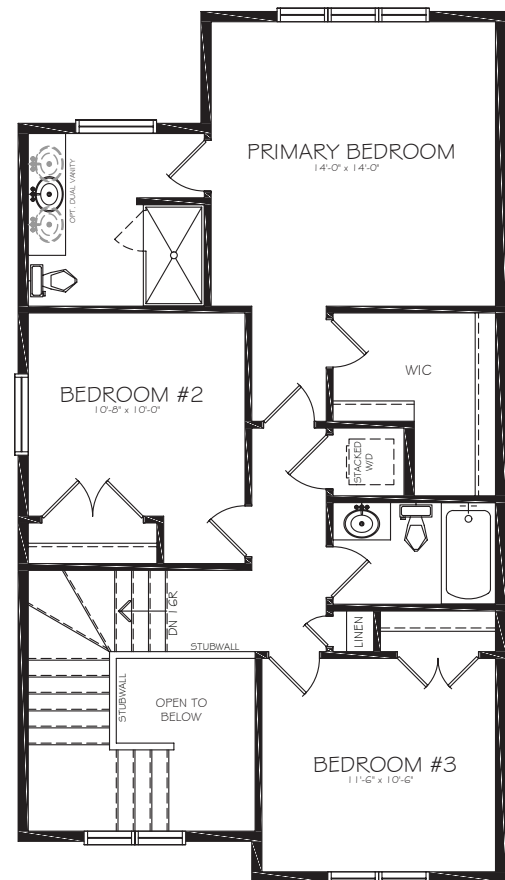


CRAFTSMAN



MAIN FLOOR

991 SF



UPPER FLOOR

819 SF

Edited: October 1, 2025 The illustrations shown on this brochure are renderings only and do not represent the final look of your home. Elevations are also subject to approval from Architectural Controls. Fifth Avenue Homes retains the right to alter plans, features and specifications without notice. Standard floor plan does not include basement development, deck or options in the base price. Room sizes are approximate.

Tillotson

EMAIL
tillotson@fifthavehomes.com

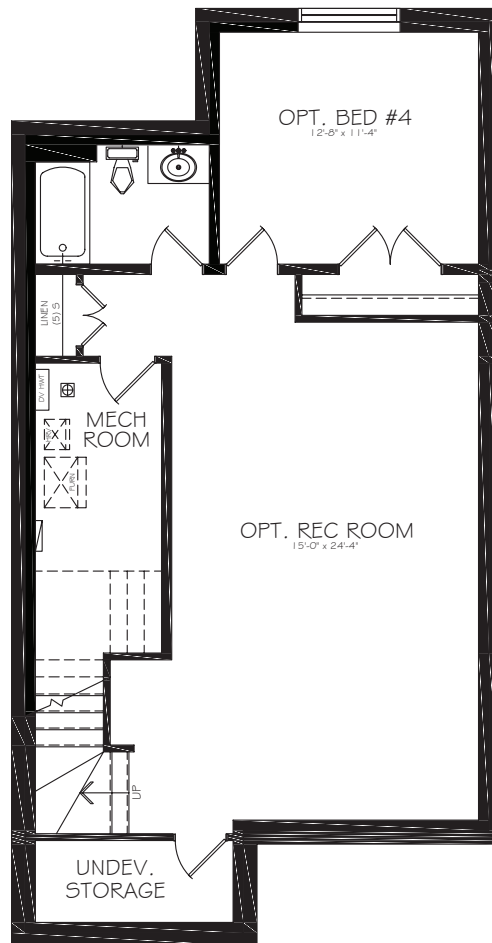
PHONE
403.830.0234

BARROW 1,810 SF // 3 beds // 2.5 baths

5TH
AVE



CRAFTSMAN



OPTIONAL BASEMENT DEVELOPMENT

715 SF

Edited: October 1, 2025 The illustrations shown on this brochure are renderings only and do not represent the final look of your home. Elevations are also subject to approval from Architectural Controls. Fifth Avenue Homes retains the right to alter plans, features and specifications without notice. Standard floor plan does not include basement development, deck or options in the base price. Room sizes are approximate.

Tillotson

EMAIL
tillotson@fifthavehomes.com

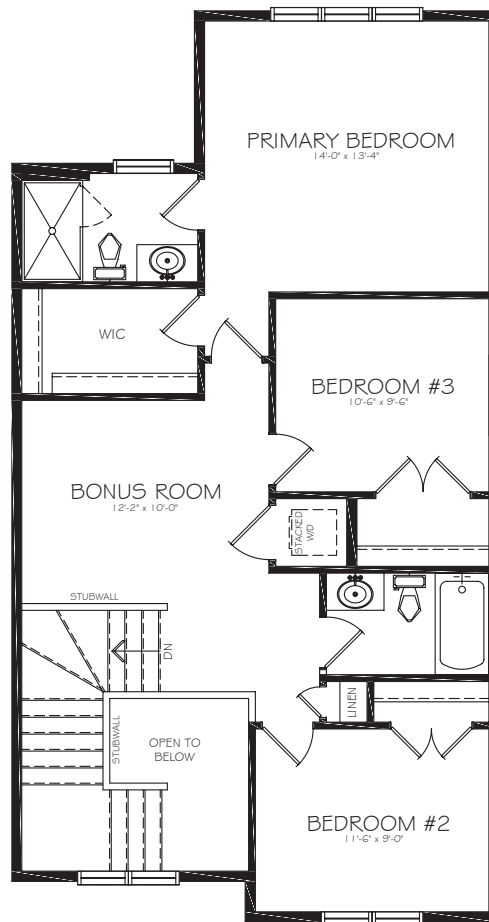
PHONE
403.830.0234

BARROW 1,810 SF // 3 beds // 2.5 baths

5TH
AVE



CRAFTSMAN



OPTIONAL UPPER FLOOR BONUS ROOM LAYOUT

819 SF

Edited: October 1, 2025 The illustrations shown on this brochure are renderings only and do not represent the final look of your home. Elevations are also subject to approval from Architectural Controls. Fifth Avenue Homes retains the right to alter plans, features and specifications without notice. Standard floor plan does not include basement development, deck or options in the base price. Room sizes are approximate.

Tillotson

EMAIL
tillotson@fifthavehomes.com

PHONE
403.830.0234