

HEATH

1,488 SF // 3 beds // 2.5 baths

5TH
AVE

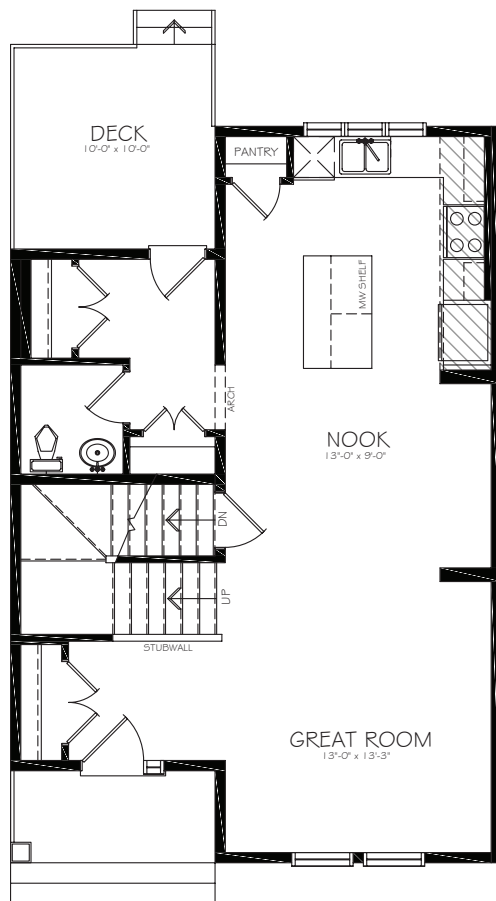


CRAFTSMAN

OR

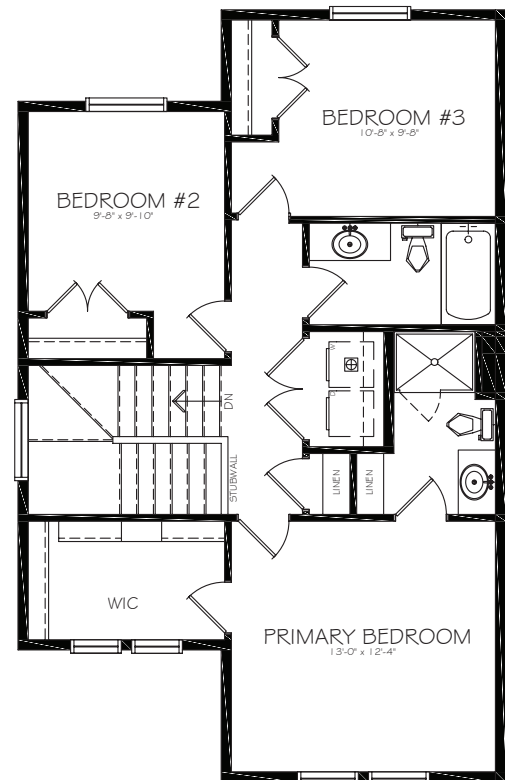


PRAIRIE



MAIN FLOOR

759 SF



UPPER FLOOR

729 SF

Edited: October 1, 2025 The illustrations shown on this brochure are renderings only and do not represent the final look of your home. Elevations are also subject to approval from Architectural Controls. Fifth Avenue Homes retains the right to alter plans, features and specifications without notice. Standard floor plan does not include basement development, deck or options in the base price. Room sizes are approximate.

Tillotson

EMAIL
tillotson@fifthavehomes.com

PHONE
403.830.0234

FIFTHAVEHOMES.COM

HEATH

1,488 SF // 3 beds // 2.5 baths

5TH
AVE

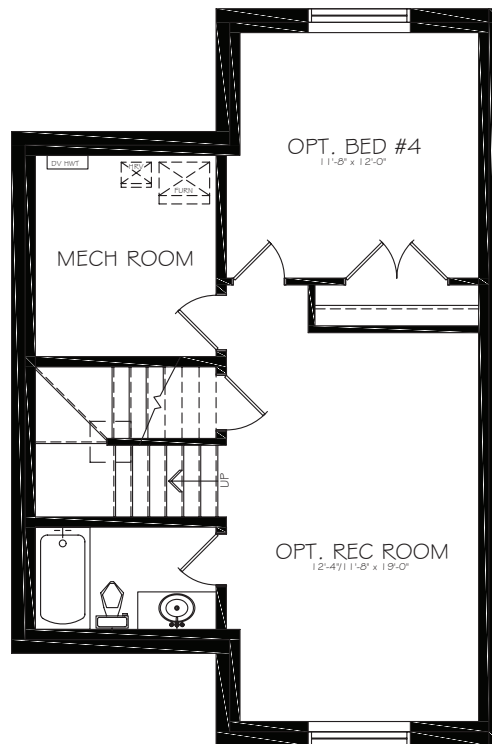


CRAFTSMAN

OR



PRAIRIE



OPTIONAL BASEMENT DEVELOPMENT

511 SF

Edited: October 1, 2025 The illustrations shown on this brochure are renderings only and do not represent the final look of your home. Elevations are also subject to approval from Architectural Controls. Fifth Avenue Homes retains the right to alter plans, features and specifications without notice. Standard floor plan does not include basement development, deck or options in the base price. Room sizes are approximate.

Tillotson

EMAIL
tillotson@fifthavehomes.com

PHONE
403.830.0234

FIFTHAVEHOMES.COM

HEATH II

1,583 SF // 3 beds // 2.5 baths // optional floorplan extension

5TH
AVE

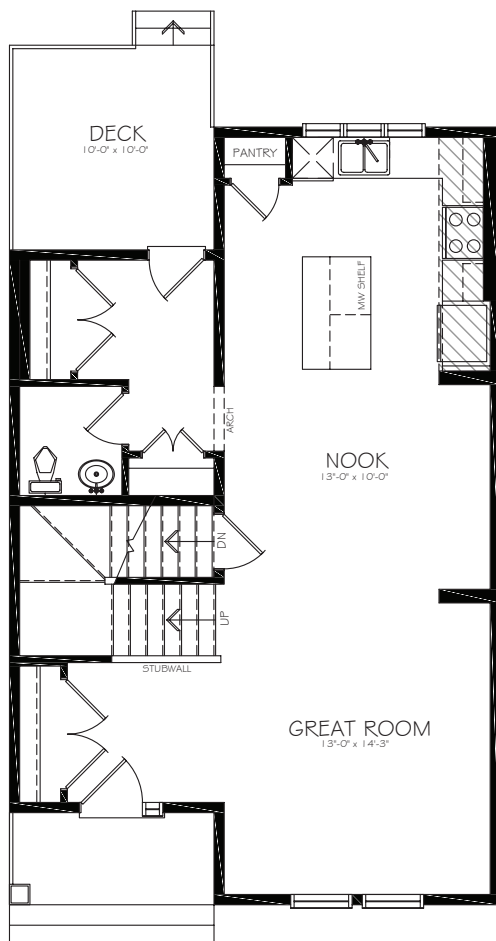


CRAFTSMAN

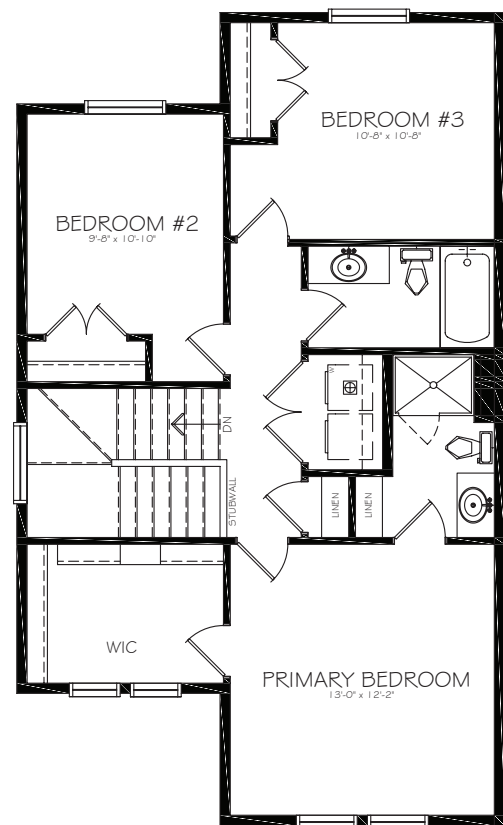
OR



PRAIRIE



MAIN FLOOR
806 SF



UPPER FLOOR
777 SF

Edited: October 1, 2025 The illustrations shown on this brochure are renderings only and do not represent the final look of your home. Elevations are also subject to approval from Architectural Controls. Fifth Avenue Homes retains the right to alter plans, features and specifications without notice. Standard floor plan does not include basement development, deck or options in the base price. Room sizes are approximate.

Tillotson

EMAIL
tillotson@fifthavehomes.com

PHONE
403.830.0234